

President's Message–SFC

Dear Members,

My term as President of the San Francisco Chapter has finally drawn to a close and it is with tremendous gratitude that I thank our Members and Volunteers who have done so much during my two years:

Our **Board of Directors**, Carrie Drilling, Diana Jaye, Judy Puccini, Alisan Andrews, Sharon Harris, Loretta Hawkins, Laura Johnson, Doris Guzman, Ann Basuino, Mary Long, Camilla Roos, Barbara Todd, David McKean, and our newest Board member, Mary Mahon. These are the dedicated members who tire effortlessly to ensure that the basic functions of our society work for our members. And for the tremendous effort they expended searching for a new location, preparing the Center and packing, moving, and setting up in our new location.

Our **Volunteers**, many who came from afar, to help at receiving and hanging so our members can have an opportunity to exhibit their works. And to those Members who take the time to encourage their friends and students to join SWA.

Our **Donor Members** who have donated monies to support SWA in its endeavors.

Our **SWA Members**, many of whom I've had the great pleasure to meet, for your continued support of our 76 year old art society. Because of your membership, SWA has been able to sustain itself as one of the oldest art groups in the United States that has continuously provided an opportunity for artists to show their works and participate in art education. As a member supported arts organization, SWA has one of the largest venues for artist exhibitions and art education as a non-profit. This is what you have been able to achieve by maintaining a tradition since 1939.

Thank you, thank you, thank you, to each and every one of you for making SWA a great organization! And with these thoughts in mind, I sign off as.....

Sherry Vockel

The SWA October/November 2015 Exhibit People's Choice Award goes to "Morning Mist"
by Yvonne Newhouse. Congratulations, Yvonne!

General Meeting and Demo

Saturday, January 16, 1 p.m., SWA Gallery

Michael Rodman

Five Easy Steps to Painting Faster Outdoors

Michael Rodman, a native San Franciscan, is an accomplished artist and teacher who paints landscapes and San Francisco scenes with a bold use of color and paint texture that captures the unique lighting of the City. He plans to demonstrate the following 5 easy steps to painting faster outdoors:

1. Solving the dilemma of "too many greens out there."
(Paint what you know, not what you think you see...)
2. Photographs are NOT your friend...especially the Photoshop ones from the internet.
3. Draw less and paint more! Limit your sketch to 5 minutes MAX.
4. Limit your palette and premix your colors.
5. Paint like you only have 30 minutes left.

General Meeting and Demo

Saturday, February 20, 1 p.m., SWA Gallery

Rebecca Holland

Grasses and Clouds in Oil

Rebecca Holland will be demonstrating how to paint clouds and the fine detail in grasses. She has been painting landscapes for nearly 50 years. Her passion has been driven by the natural beauty she sees in the fog and the light on the redwood forest, the ocean, and the farmlands of rural California where she lives and works. Her impeccable detail and technique are self-taught skills, honed from years of observing. As a child Rebecca was inspired by the techniques of the classic European painters and their use of detail, especially the light that emerges from darkness. At Lobitos Creek Ranch, Rebecca paints, works with her horses, and is the art director at the ranch that produces award-winning documentaries on environmental and social issues. Visit the ranch at www.lobitoscreekranch.com.

SWA TRUSTEES

Joyce Barron Leopardo, Chair	650-348-8269
Diana Jaye, Treasurer	650-322-0148
Dennis Lewis	559-325-8294
Dean Dallin	559-291-4272
Doris Guzman	415-731-4038
Ann Basuino	415-564-7254
Berni Jahnke	650-854-2603
Sherry Vockel	650-922-7474
Perry Close, Emeritus Trustee	

SWA CONTACTS

SFC President	Sherry Vockel	650-922-7474
Web Master	Barbara Todd	650-369-6859
SJVC President	Linda Lamb	559-275-1597
1st Vice President/ Director of Exhibits	Carrie Drilling	650-692-8998
2nd Vice President Demos/Workshops Secretary/ Gallery Coordinator	Sharon Harris	650-615-9856
Treasurer	Diana Jaye	650-322-0148
Advertising/Bulletin	Laura Johnson	650-591-1595
Membership	Loretta Hawkins	650-588-1154
Publicity	Judy Puccini	650-737-6084
Signature Awards	Doris Guzman	415-731-4038

2016 Executive Board Election

The current slate of candidates for 2016 is:

- President —Carrie Drilling
- 1st VP—Ann Basuino
- 2nd VP—David McKean
- Treasurer—Doris Guzman
- Secretary—Sharon Harris

At our January 16th meeting, members will vote for our slate of volunteer officers.

Solo Show by Angelo Robinson

SWA Angelo Robinson just finished up his solo show at the Art Center displaying his “Mind of the Artist” exhibit. His show was well received and had a great turn out of visitors. There are several slots open in 2016 for SWA members to have a solo or group show. Any type of art may be displayed in these shows. If you’re interested, contact Carrie Drilling at ccdilling@pacbell.net to reserve your time slot.

Millbrae Camera Club Exhibit at SWA Gallery

December 11–20

From December 11 through December 20, the Millbrae Camera Club will be exhibiting a selection of their members photographs. I hope you will take the time to come by the Art Center to see this exhibit.

Please inform the board if you know of members who are ill or have died or have lost family members.

SCHEDULE OF EVENTS

December

25–1/8/16 SWA Fine Art Center Closed

SWA January–February Exhibit

January 14–March 4

Receiving January 9

January

16

Board Meeting

Mike Rodman Oil Demo

February

20

Board Meeting

Rebecca Holland Oil Demo

Center Hours: 11–3, Thursday–Saturday

New Corresponding Secretary

The Board of Directors is happy to announce that our new member, **Mary Mahon**, has joined the Board as our Corresponding Secretary. Welcome, Mary, and thanks for becoming a part of our team!

Our condolences to Shirlee Rehart, whose husband recently passed away.

The Bulletin is published 6 times per year (Jan/Feb, Mar/Apr, May/Jun, Jul/Aug, Sep/Oct, Nov/Dec)

Advertise your workshops, classes, etc.

Rates: \$10 per ad per newsletter—50 word maximum; \$20 per ad over 50 words. Make checks payable to SWA.

Deadlines for ads and news is the 5th of Dec (Jan/Feb), Feb (Mar/Apr), Apr (May/Jun) Jun (Jul/Aug), Aug (Sep/Oct), Oct (Nov/Dec).

No brochures or printed matter accepted. Please type your ad and send with your check to: Laura Johnson, 3408 Beresford Ave., Belmont, CA 94002. You may send info to dollsinmin@gmail.com. Check must be received before your ad can be published.

2016 SWA Exhibit Schedule

SWA January/February 2016 Exhibit	January 14–March 4, 2016 Receiving January 9, 2016
Board Meeting/Demo	January 16, 2016
Board Meeting/Demo	February 20, 2016
SWA March/April 2016 Exhibit	March 10–April 29, 2016
Board Meeting/Demo	March 19, 2016
Jerold Boyd SWA Pastel Workshop	April 9, 10, 2016
Board Meeting/Demo	April 16, 2016
High School Exhibit	May 5–May 14, 2016
Board Meeting/Demo	May 21, 2016
Guest Show	May 15–24, 2016
Richard Lindenberg Plein Air W/S	May 27–29, 2016
Guest Show	May 30–June 9, 2016
SWA 66th Annual Exhibit	June 16–July 31, 2016 Receiving June 11, 2016; Reception–Awards July 31, 2016
Board Meeting/Demo	June 18, 2016
SWA August Exhibit	August 11–September 9, 2016 Receiving August 6, 2016
SWA September/October Exhibit	September 15–October 28, 2016 Receiving September 10, 2016
Board Meeting/Demo	September 17, 2016
Guy Magallanes W/C Workshop	October 6–8, 2016
Board Meeting/Critique	October 15, 2016
SWA November December 2016 Exhibit	November 3–December 9, 2016 Receiving October 29, 2016
Board Meeting/Demo	November 19, 2016
Guest Show (s)	December 10–24

Demonstrations for 2016

Jan. 16	Mike Rodman	Oil, Landscape with Palette Knife
Feb. 20	Rebecca Holland	Oil, Grasses and Clouds
March 19	Jim Smyth	Perspective, How to Put People in Landscape and Correcting Perspective in Photographs
April 16	Kay Duffy	WC, Flowering Trees in Orchards
May 21	Pat Suggs	Pastel Floral, Painting White Poppies
June 18	Guy Magallanes	WC, demo for Workshop in October
Sep. 17	Olga Parr	Acrylic, Painting Seascapes
Oct. 15	Critique	Artist to be Determined
Nov. 19	Terri Ford	Pastel Landscape

Workshops 2016

Gerald Boyd Still Life Techniques in Pastel and Oil Fees: \$150 SWA members; \$185 non-members	April 9, 10	Guy Magallanes Watercolor Techniques Fees: \$225 SWA members; \$250 non-members <i>www.societyofwesternartists.com</i>	October 6, 7, 8
Richard Lindenberg Plein Air Oil Painting Fees: \$425 SWA members; \$460 non-members	May 27, 28, 29		

SOCIETY OF WESTERN *Artists*



January 16
MICHAEL RODMAN
 PALETTE KNIFE OIL PAINTING
 WITH A LANDSCAPE
 Saturday, 1:00 - 3:00 PM

**2016 ARTIST LECTURE
 & PAINTING
 DEMONSTRATIONS**
FREE and open to everyone!

**Watch renown Bay Area artists
 demonstrate their painting techniques**
Third Saturday of the Month
1:00 - 3:00 PM



February 20
REBECCA HOLLAND
 TECHNIQUES FOR CLOUDS &
 GRASSES USING OIL PAINTS
 Saturday, 1:00 - 3:00 PM



March 19
**JIM SYMTH - USING PERSPECTIVE TO
 PUT PEOPLE IN YOUR PAINTINGS;
 CORRECT PERSPECTIVE IN PHOTOS**
 Saturday, 1:00 - 3:00 PM



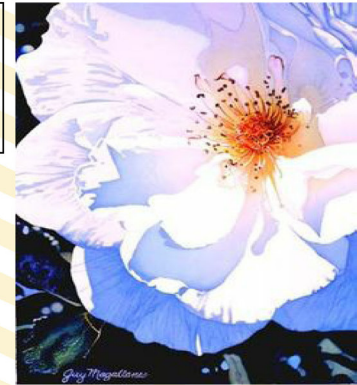
April 16
KAY DUFFY, SWA
 FLOWERING TREES IN WATERCOLOR
 Saturday, 1:00 - 3:00 PM



May 21
PAT SUGGS, PSA, PSWC, SWA
 PASTEL FLORAL - CREATING WHITES
 & PERSPECTIVE
 Saturday, 1:00 - 3:00 PM



June 18
GUY MAGALLANES, CWA
 WATERCOLOR TECHNIQUES FOR
 BRILLIANT COLOR - WORKSHOP IN
 OCTOBER
 Saturday, 1:00 - 3:00 PM



September 17
OLGA PARR, SWA
 ACRYLIC TECHNIQUES USING A
 SEASCAPE OR LANDSCAPE
 Saturday, 1:00 - 3:00 PM



October 15
PAINTING CRITIQUE - Critique of
 paintings for SWA members. Please
 bring 2 paintings for an opportunity
 to learn how to improve your work.
 Saturday, 1:00 - 3:00 PM

November 19
TERRI FORD, PSA, PSWC, SPS
 PASTEL TECHNIQUES TO USE IN
 A LANDSCAPE PAINTING
 Saturday, 1:00-3:00 PM

527 San Mateo Avenue in San Bruno
 (650) 225-9250
 Center Hours: Thursday - Saturday 11:00 AM - 3:00 PM
 A Non-Profit 501c3 Artist Organization
 FOR MORE INFORMATION VISIT OUR WEBSITE AT
www.societyofwesternartists.com

SOCIETY OF
WESTERN
Artists

Artist Workshops 2016

Workshops are open to anyone interested in studying with a professional artist.

Registration Forms available inside the SWA Art Center or at our website at:

www.societyofwesternartists.com



GERALD BOYD, PSA, PSWC, SWA
Pastel Techniques with Still Lifes - 2 Days
Oil Painters Welcome

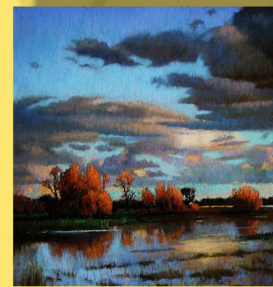
April 9 & 10, Saturday - Sunday

9:00 AM - 4:00 PM

Working with a variety of still life set-ups, Gerald will teach you underpainting techniques, how to use rich colors & bold strokes that can be used with any subject matter.

Beginner to Advanced Students

\$150 SWA Members \$185 Non-SWA Members



RICHARD LINDENBERG
Oil Plein Aire Painting Techniques - 3 Days
Pastel Painters Welcome

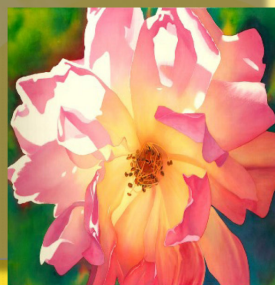
May 27, 28, 29 Friday - Sunday

9:00 AM - 4:00 PM

Learn more about design basics, choosing & mixing colors, and seeing proper values. Richard will help you see & communicate more clearly with your paintings. Basic painting experience required.

Beginner to Advanced Students

\$425 SWA Members \$460 Non-SWA Members



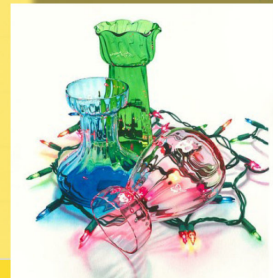
GUY MAGALLANES, CWA
Gallery Wrapped Watercolor Techniques - 3 Days
October 6, 7, 8 Thursday - Saturday

9:00 AM - 4:00 PM

Guy will teach you how to create a painting on watercolor paper stretched over canvas stretcher bars from choosing your colors to laying in your washes to varnishing your finished painting.

Beginner to Advanced Students

\$225 SWA Members \$250 Non-SWA Members



Society of Western Artists Fine Art Center
527 San Mateo Avenue San Bruno, CA (650) 225-9250
www.societyofwesternartists.com

A Non Profit 501c3 Art Society

BILL

Annual Membership Dues
Due on or before January 1, 2016

Dear SWA Member:

1. Your membership expiration date is 12/31/15. Please remit on or before January 1, 2016.
San Joaquin Valley MEMBERS WILL BE BILLED BY SJVC.
2. BE SURE to include your address label if you receive the Bulletin by mail.

Annual SWA Dues \$45.00

Tel. No: _____
(helps to complete our roster)

ADDITIONAL DONATION: _____

Directions to SWA San Bruno

From 280: take the San Bruno Exit east (towards the Airport). At San Mateo Avenue (approximately 1/4 mile) turn right on San Mateo Avenue.

From 101: exit San Bruno Avenue west over the freeway. San Mateo Avenue is immediately after the CalTrain elevated track, turn left. Caltrain station is two blocks south on San Mateo Avenue.

SOCIETY OF WESTERN ARTISTS
527 San Mateo Avenue San
Bruno, CA 94066